

KARI PROPRIETARY

Request For Proposal  
for  
Hydraulic bearing for slip table  
maintenance



October 2016

Space Test Division

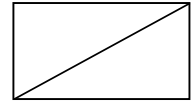
Korea Aerospace Research Institute

169-84 Gwahangno, Yuseong-gu, Daejeon, 305-806, KOREA  
Phone : 82(42)860-2562, Fax : 82(42)860-2234

KARI PROPRIETARY

# Request For Proposal

for



## Hydraulic bearing for slip table maintenance

### **IMPORTANT**

1. This RFP should be kept in confidentiality and should neither be copied nor distributed to the third parties.
2. The questions and opinions on this RFP can be asked or suggested to Korea Aerospace Research Institute before submission of the proposal.
3. This RFP shall be legal bind after the contract is awarded unless the bidder explicitly expresses the differences from the RFP in the compliance sheet.

October 2016

### **Space Test Division**

## **Korea Aerospace Research Institute**

169-84 Gwahangno, Yuseong-gu

DAEJEON, 34133 KOREA

Phone : 82(42)860-2562, FAX : 82(42)860-2234

e-mail : [acoust@kari.re.kr](mailto:acoust@kari.re.kr)

# Table of Contents

<b>I. OVERVIEW.....</b>	<b>2</b>
1. WORK DESCRIPTION.....	2
2. DELIVERABLES .....	2
3. WARRANTY .....	2
<b>II. TECHNICAL REQUIREMENTS .....</b>	<b>2</b>
1. TOTAL SYSTEM CONFIGURATION .....	3
2. TECHNICAL REQUIREMENTS .....	3

## I. OVERVIEW

### 1. Work description

The system hardware shall be manufactured to satisfy the hydraulic bearing performance described in this RFP. All manufacturing operations shall be planned in co-ordination with inspections and tests.

Contractor shall supply the technical verification of bearing component to show the meet the performance requirement.

Contract shall supply the dimensional report on bearings component and show the compatibility with KARI slip table.

### 2. Deliverables

The hardware deliveries shall include, as a minimum, the following:

Item No.	Part name	Qty	Description
1	Z bearing spare part	1	- Z hydraulic bearing - 300mm x 300mm x 106.5 mm
2	YZ bearing spare part	1	- YZ hydraulic bearing - 700mm x 370mm x 106.5 mm
3	Remote control panel	1	- Schneider PLC box - 400mm x 300mm x 200mm

### 3. Warranty

- 3.1 The system shall be warranted for a duration of 1 years after delivery.
- 3.2 The warranty covers the replacement of faulty parts, the labor required for repair, traveling cost, living fees and all associated necessary costs.

## II. Technical Requirements

## 1. Total System Configuration

This document covers the technical requirements applicable to maintenance parts for KARI slip table system

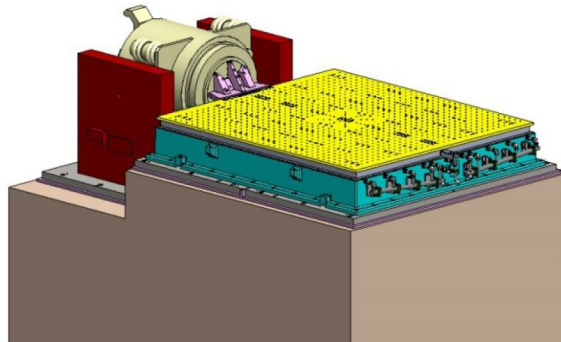


Figure 1 3m-slip table system of KARI

## 2. Technical Requirements

The work scope for procurement is

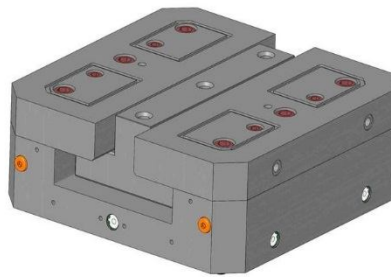
- To supply hydraulic bearing
- To supply remote control panel for the operation of hydraulic pump
- To supply technical requirement verification

### 2.1 List of Maintenance Parts

The supplied maintenance part shall have the following requirement as minimum:

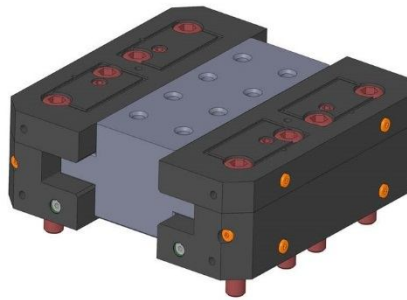
#### - Z hydraulic bearing

	Z bearing
Working travel	65 mm (75,6 mm*)
Rated dynamic load in horizontal operation (perpendicular direction)	120 000 N
Rated dynamic load in vertical operation (perpendicular direction)	90 000 N
Oil pressure	40 bars
Size (LxWxH)	300 x 300 x1 06,5
Moving mass	4,5 kg



- **Z hydraulic bearing**

	YZ M
Working travel	65 mm
Rated dynamic load in horizontal operation(perpendicular direction)	120 000 N
Rated dynamic load in horizontal operation(lateral direction)	90 000 N
Rated dynamic load in vertical operation(perpendicular direction)	90 000 N
Rated dynamic load in vertical operation(lateral direction)	50 000 N
Oil pressure	40 bar
Oil flow	< 1 l/min
Size (L x W x H)	700 x 370 x 106,5
Moving weight	12 kg



- **Remote control panel : 1 EA**

- ✓ Schneider PLC box(400mm x 300mm x 200mm)
- ✓ Touch screen of 3.5 inch with emergency stop switch
- ✓ Start & Stop hydraulic pump with touch screen
- ✓ All the default information shall be indicated on screen of remote control panel